

**CER1 Antibody**  
**Mouse Monoclonal Antibody to CER1**  
**Catalog # AO1313b****Specification**

---

**CER1 Antibody - Product Information**

Application	WB, E
Primary Accession	<a href="#">O95813</a>
Reactivity	Human
Host	Mouse
Clonality	Monoclonal
Isotype	Mouse IgG1
Calculated MW	30084

**Description**

CER1: cerberus 1, cysteine knot superfamily, homolog (Xenopus laevis). It is a cytokine member of the cysteine knot superfamily, characterized by nine conserved cysteines and a cysteine knot region. The cerberus-related cytokines, together with Dan and DRM/Gremlin, represent a group of bone morphogenetic protein (BMP) antagonists that can bind directly to BMPs and inhibit their activity.

**Immunogen**

Purified recombinant fragment of human CER1 expressed in E. Coli.

**CER1 Antibody - Additional Information**

**Gene ID** 9350

**Other Names**

Cerberus, Cerberus-related protein, DAN domain family member 4, CER1, DAND4

**Target/Specificity**

Purified recombinant fragment of human CER1 expressed in E. Coli.

**Dilution**

WB~~1:500~~2000

E~~N/A

**Format**

Ascitic fluid containing 0.03% sodium azide.

**Storage**

Maintain refrigerated at 2-8°C for up to 6 months. For long term storage store at -20°C in small aliquots to prevent freeze-thaw cycles.

**Precautions**

CER1 Antibody is for research use only and not for use in diagnostic or therapeutic procedures.

**CER1 Antibody - Protein Information**

**Name** CER1

**Synonyms** DAND4

**Function**

Cytokine that may play a role in anterior neural induction and somite formation during embryogenesis in part through a BMP- inhibitory mechanism. Can regulate Nodal signaling during gastrulation as well as the formation and patterning of the primitive streak (By similarity).

**Cellular Location**

Secreted.

**CER1 Antibody - Protocols**

Provided below are standard protocols that you may find useful for product applications.

- [Western Blot](#)
- [Blocking Peptides](#)
- [Dot Blot](#)
- [Immunohistochemistry](#)
- [Immunofluorescence](#)
- [Immunoprecipitation](#)
- [Flow Cytometry](#)
- [Cell Culture](#)

**CER1 Antibody - Images**

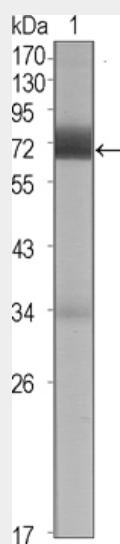


Figure 1: Western blot analysis using CER1 mouse mAb against CER1 (aa18-267)-hIgGFc transfected HEK293 cell lysate (1).

**CER1 Antibody - References**

1. Dev Biol. 1998 Feb 15;194(2):135-51.
2. Growth Factors. 2004 Dec;22(4):233-41.
3. PLoS One. 2009;4(4):e5302.